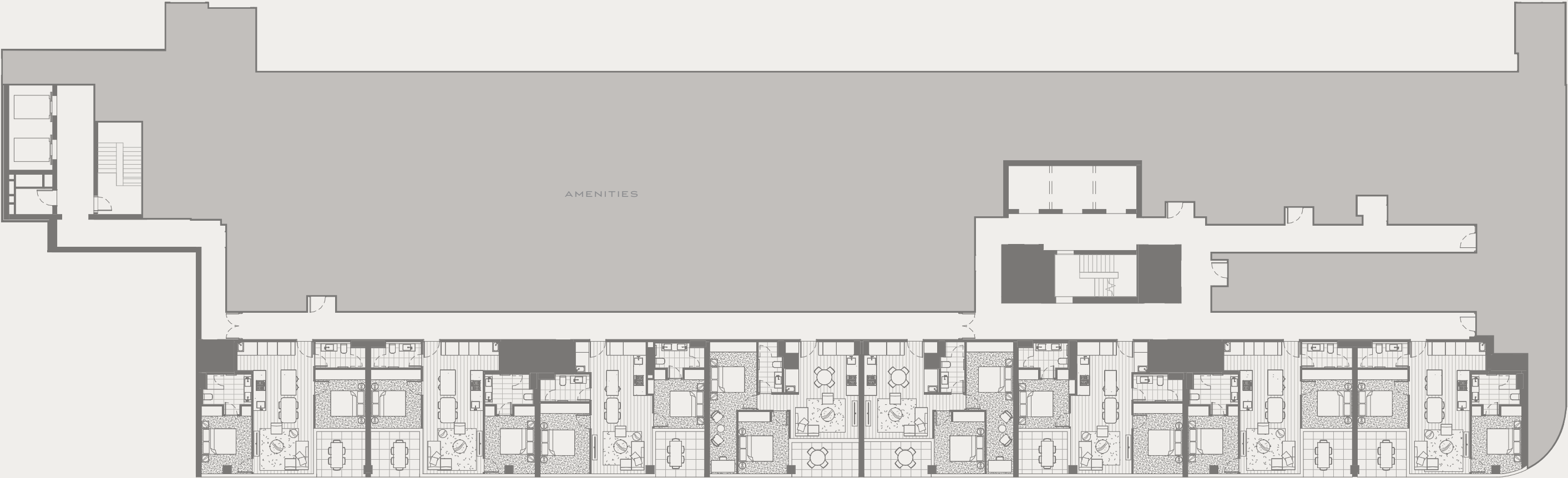


MASTERPLAN



These plans are intended as a guide only. The dimensions and areas are approximate only and may not accurately represent the actual dimensions and areas of the apartments or the spaces within them and are subject to change without notice. In addition, locations of utilities may vary during construction and fittings and fixtures on these plans are for illustrative purposes only. The areas are generally measured in accordance with the Property Council of Australia method of measurement. Prospective purchasers must rely on their own enquiries and should refer to the Contract of Sale and its schedules for all matters to be included in the purchase price of the apartment, including plans, finishes, fixtures, fittings, appliances and other particulars of sale. Loose furniture and planters are not included. Extent of floor finishes may vary. External space and landscaping indicative only. Refer to level plans for further information.

AZALEA LEVEL 1 - 1M



APARTMENT 08 TYPE 116		APARTMENT 07 TYPE 116		APARTMENT 06 TYPE 117		APARTMENT 05 TYPE 118		APARTMENT 04 TYPE 118		APARTMENT 03 TYPE 117		APARTMENT 02 TYPE 116		APARTMENT 01 TYPE 116.1	
2 BED 2 BATH		2 BED 2 BATH		2 BED 2 BATH		2 BED 1 BATH + STUDY		2 BED 1 BATH + STUDY		2 BED 2 BATH		2 BED 2 BATH		2 BED 2 BATH	
INTERNAL	70M ²	INTERNAL	71M ²	INTERNAL	71M ²	INTERNAL	67M ²	INTERNAL	67M ²	INTERNAL	71M ²	INTERNAL	71M ²	INTERNAL	70M ²
EXTERNAL	8M ²	EXTERNAL	8M ²	EXTERNAL	8M ²	EXTERNAL	9M ²	EXTERNAL	9M ²	EXTERNAL	8M ²	EXTERNAL	8M ²	EXTERNAL	8M ²
TOTAL	78M ²	TOTAL	79M ²	TOTAL	79M ²	TOTAL	76M ²	TOTAL	76M ²	TOTAL	79M ²	TOTAL	79M ²	TOTAL	78M ²



NOT TO SCALE

These plans are intended as a guide only. The dimensions and areas are approximate only and may not accurately represent the actual dimensions and areas of the apartments or the spaces within them and are subject to change without notice. In addition, locations of utilities may vary during construction and fittings and fixtures on these plans are for illustrative purposes only. The areas are generally measured in accordance with the Property Council of Australia method of measurement. Prospective purchasers must rely on their own enquiries and should refer to the Contract of Sale and its schedules for all matters to be included in the purchase price of the apartment, including plans, finishes, fixtures, fittings, appliances and other particulars of sale. Loose furniture and planters are not included. Extent of floor finishes may vary. External space and landscaping indicative only. Refer to level plans for further information.

AZALEA LEVEL 2

APARTMENT 01 TYPE 107		APARTMENT 02 TYPE 119		APARTMENT 03 TYPE 105.1		APARTMENT 04 TYPE 113.1		APARTMENT 05 TYPE 112.1		APARTMENT 06 TYPE 104.1		APARTMENT 07 TYPE 111.1	
1 BED 1 BATH		2 BED 2 BATH + STUDY		1 BED 1 BATH + STUDY		2 BED 2 BATH		2 BED 2 BATH		1 BED 1 BATH		2 BED 2 BATH + STUDY	
INTERNAL	51M ²	INTERNAL	79M ²	INTERNAL	51M ²	INTERNAL	74M ²	INTERNAL	76M ²	INTERNAL	49M ²	INTERNAL	83M ²
EXTERNAL	18M ²	EXTERNAL	26M ²	EXTERNAL	19M ²	EXTERNAL	35M ²	EXTERNAL	35M ²	EXTERNAL	22M ²	EXTERNAL	23M ²
TOTAL	69M ²	TOTAL	105M ²	TOTAL	70M ²	TOTAL	109M ²	TOTAL	111M ²	TOTAL	71M ²	TOTAL	106M ²



APARTMENT 14 TYPE 120		APARTMENT 13 TYPE 106		APARTMENT 12 TYPE 102.1		APARTMENT 11 TYPE 108.1		APARTMENT 10 TYPE 108.1		APARTMENT 09 TYPE 101.1		APARTMENT 08 TYPE 109.1	
2 BED 2 BATH + STUDY		1 BED 1 BATH		1 BED 1 BATH		2 BED 2 BATH		2 BED 2 BATH		1 BED 1 BATH		2 BED 2 BATH	
INTERNAL	79M ²	INTERNAL	44M ²	INTERNAL	50M ²	INTERNAL	68M ²	INTERNAL	68M ²	INTERNAL	50M ²	INTERNAL	70M ²
EXTERNAL	35M ²	EXTERNAL	33M ²	EXTERNAL	33M ²	EXTERNAL	44M ²	EXTERNAL	44M ²	EXTERNAL	33M ²	EXTERNAL	68M ²
TOTAL	114M ²	TOTAL	77M ²	TOTAL	83M ²	TOTAL	112M ²	TOTAL	112M ²	TOTAL	83M ²	TOTAL	138M ²

NOT TO SCALE



These plans are intended as a guide only. The dimensions and areas are approximate only and may not accurately represent the actual dimensions and areas of the apartments or the spaces within them and are subject to change without notice. In addition, locations of utilities may vary during construction and fittings and fixtures on these plans are for illustrative purposes only. The areas are generally measured in accordance with the Property Council of Australia method of measurement. Prospective purchasers must rely on their own enquiries and should refer to the Contract of Sale and its schedules for all matters to be included in the purchase price of the apartment, including plans, finishes, fixtures, fittings, appliances and other particulars of sale. Loose furniture and planters are not included. Extent of floor finishes may vary. External space and landscaping indicative only. Refer to level plans for further information.

AZALEA LEVEL 3 - 13



NOT TO SCALE



These plans are intended as a guide only. The dimensions and areas are approximate only and may not accurately represent the actual dimensions and areas of the apartments or the spaces within them and are subject to change without notice. In addition, locations of utilities may vary during construction and fittings and fixtures on these plans are for illustrative purposes only. The areas are generally measured in accordance with the Property Council of Australia method of measurement. Prospective purchasers must rely on their own enquiries and should refer to the Contract of Sale and its schedules for all matters to be included in the purchase price of the apartment, including plans, finishes, fixtures, fittings, appliances and other particulars of sale. Loose furniture and planters are not included. Extent of floor finishes may vary. External space and landscaping indicative only. Refer to level plans for further information.

AZALEA LEVEL 14 - 18



NOT TO SCALE

These plans are intended as a guide only. The dimensions and areas are approximate only and may not accurately represent the actual dimensions and areas of the apartments or the spaces within them and are subject to change without notice. In addition, locations of utilities may vary during construction and fittings and fixtures on these plans are for illustrative purposes only. The areas are generally measured in accordance with the Property Council of Australia method of measurement. Prospective purchasers must rely on their own enquiries and should refer to the Contract of Sale and its schedules for all matters to be included in the purchase price of the apartment, including plans, finishes, fixtures, fittings, appliances and other particulars of sale. Loose furniture and planters are not included. Extent of floor finishes may vary. External space and landscaping indicative only. Refer to level plans for further information.