

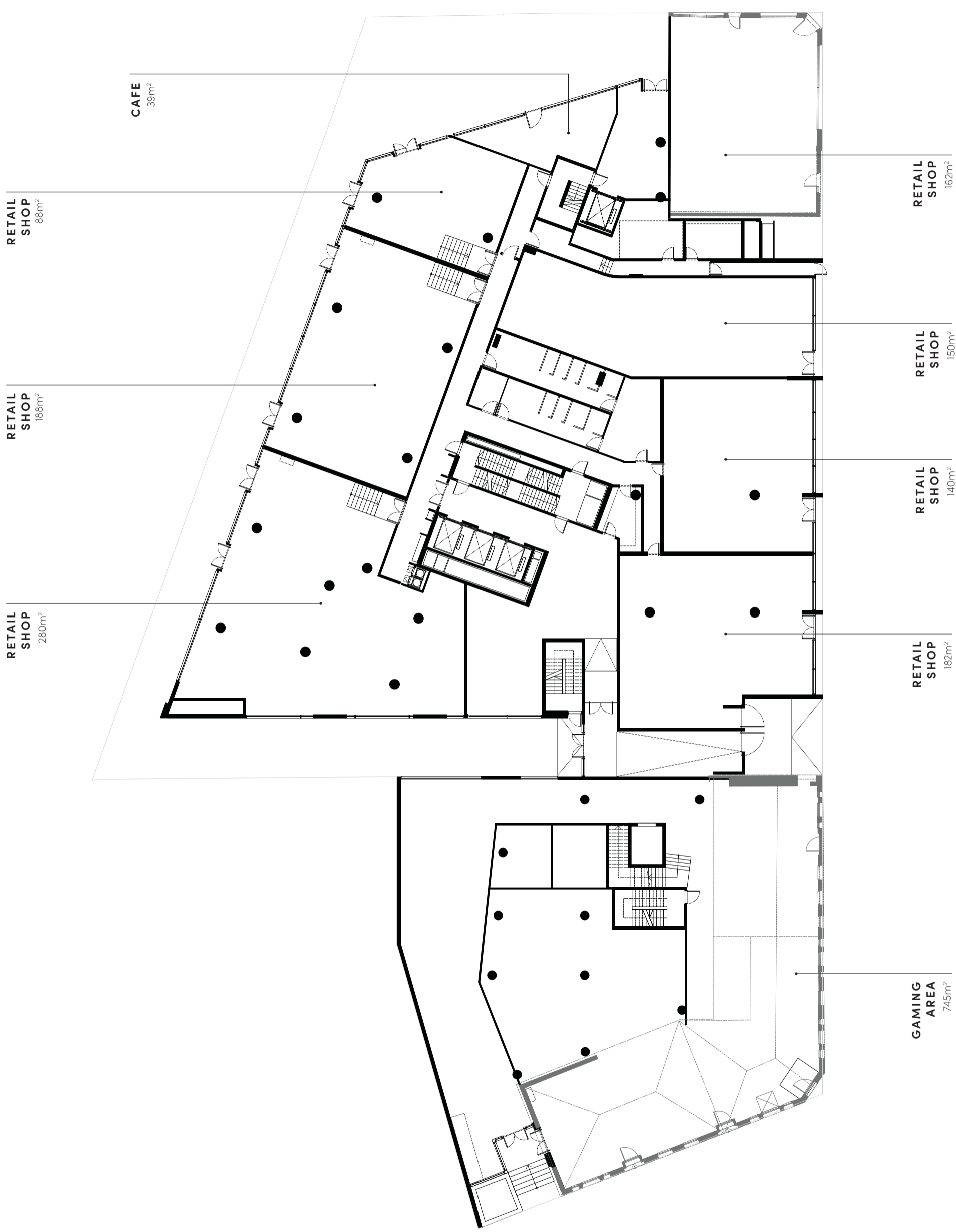


MALVERN COLLECTIVE

M EDITION LEVEL G

MALVERN COLLECTIVE

| MELBOURNE |



NORTH

Disclaimer: This plan is indicative, not to scale and for illustrative purposes only. This representation is intended as a guide only and interested parties should refer to the specific apartment floor plan for further information and dimensions. The final product may differ from that illustrated, including changes to orientation, floor plan and layout. Furniture depicted is provided as a guide only and is not sold pursuant to the contract of sale. To the extent of any inconsistency between this floor plan and the building format plan, the building format plan prevails. These plans are subject to variation as set out in the contract of sale including resulting from design changes, approvals and final survey following completion of construction. Changes, including dimensions, specifications and fittings (including colours), will occur as the development progresses.



MALVERN COLLECTIVE

M EDITION LEVEL 01

MALVERN COLLECTIVE

| MELBOURNE |



Disclaimer: This plan is indicative, not to scale and for illustrative purposes only. This representation is intended as a guide only and interested parties should refer to the specific apartment floor plan for further information and dimensions. The final product may differ from that illustrated, including changes to orientation, floor plan and layout. Furniture depicted is provided as a guide only and is not sold pursuant to the contract of sale. To the extent of any inconsistency between this floor plan and the building format plan, the building format plan prevails. These plans are subject to variation as set out in the contract of sale including resulting from design changes, approvals and final survey following completion of construction. Changes, including dimensions, specifications and fittings (including colours), will occur as the development progresses.



MALVERN COLLECTIVE

M EDITION LEVEL 02

MALVERN COLLECTIVE

MELBOURNE



APT. M 2.12
1 Bed, 1 Bath
1 Car
Int. 52.5m²
Ext. 9m²
APT. TYPE 1F

APT. M 2.13
1 Bed, 1 Bath
1 Car
Int. 50.5m²
Ext. 9.5m²
APT. TYPE 1E

APT. M 2.16
1 Bed, 1 Bath
1 Car
Int. 58.5m²
Ext. 12.5m²
APT. TYPE 1J

APT. M 2.17
1 Bed, 1 Bath
1 Car
Int. 54m²
Ext. 10m²
APT. TYPE 1K

APT. M 2.15
1 Bed, 1 Bath
1 Car
Int. 54m²
Ext. 12.5m²
APT. TYPE 1GG

APT. M 2.14
1 Bed, 1 Bath
1 Car
Int. 52.5m²
Ext. 10m²
APT. TYPE 1H

APT. M 2.01
2 Bed, 2 Bath
1 Car
Int. 81m²
Ext. 9.5m²
APT. TYPE 2A

APT. M 2.02
2 Bed, 2 Bath
1 Car
Int. 81m²
Ext. 9.5m²
APT. TYPE 2A

APT. M 2.03
1 Bed, 1 Bath
1 Study, 1 Car
Int. 66m²
Ext. 9.5m²
APT. TYPE 1QQ

APT. M 2.04
2 Bed, 2 Bath
1 Car
Int. 80m²
Ext. 9.5m²
APT. TYPE 2VV

APT. M 2.10
2 Bed, 1 Bath
1 Car
Int. 67m²
Ext. 10m²
APT. TYPE 2D

APT. M 2.11
1 Bed, 1 Bath
1 Car
Int. 49m²
Ext. 9.5m²
APT. TYPE 1R

APT. M 2.09
1 Bed, 1 Bath
1 Car
Int. 59m²
Ext. 17.5m²
APT. TYPE 1Q

APT. M 2.08
2 Bed, 2 Bath
1 Car
Int. 79m²
Ext. 9.5m²
APT. TYPE 2Y

APT. M 2.07
2 Bed, 2 Bath
1 Car
Int. 79m²
Ext. 9.5m²
APT. TYPE 2Y

APT. M 2.06
2 Bed, 2 Bath
1 Car
Int. 79m²
Ext. 31m²
APT. TYPE 2E

APT. M 2.05
2 Bed, 2 Bath
1 Car
Int. 79m²
Ext. 31m²
APT. TYPE 2E



Disclaimer: This plan is indicative, not to scale and for illustrative purposes only. This representation is intended as a guide only and interested parties should refer to the specific apartment floor plan for further information and dimensions. The final product may differ from that illustrated, including changes to orientation, floor plan and layout. Furniture depicted is provided as a guide only and is not sold pursuant to the contract of sale. To the extent of any inconsistency between this floor plan and the building format plan, the building format plan prevails. These plans are subject to variation as set out in the contract of sale including resulting from design changes, approvals and final survey following completion of construction. Changes, including dimensions, specifications and fittings (including colours), will occur as the development progresses.



MALVERN COLLECTIVE

M EDITION
LEVEL 03

MALVERN COLLECTIVE

| MELBOURNE |



NORTH

APT.
M 3.16
2 Bed, 2 Bath
1 Car
Int. 74m²
Ext. 32.5m²

APT.
TYPE
2HH

APT.
M 3.13
1 Bed, 1 Bath
1 Car
Int. 50.5m²
Ext. 9.5m²

APT.
TYPE
1E

APT.
M 3.12
1 Bed, 1 Bath
1 Car
Int. 52.5m²
Ext. 9m²

APT.
TYPE
1F

APT.
M 3.15
1 Bed, 1 Bath
1 Car
Int. 50m²
Ext. 15m²

APT.
TYPE
1U

APT.
M 3.14
2 Bed, 1 Bath
1 Car
Int. 73m²
Ext. 13.5m²

APT.
TYPE
2Z

APT.
M 3.01
2 Bed, 2 Bath
1 Car
Int. 78.5m²
Ext. 12m²

APT.
TYPE
2H

APT.
M 3.02
2 Bed, 2 Bath
1 Car
Int. 78.5m²
Ext. 12m²

APT.
TYPE
2H

APT.
M 3.03
1 Bed, 1 Bath
1 Study, 1 Car
Int. 64m²
Ext. 12m²

APT.
TYPE
1RR

APT.
M 3.04
2 Bed, 1 Bath
1 Car
Int. 69m²
Ext. 20.5m²

APT.
TYPE
2WW

APT.
M 3.11

APT.
TYPE
2D

APT.
M 3.10

APT.
TYPE
2I

APT.
M 3.09

APT.
TYPE
1Y

APT.
M 3.08

APT.
TYPE
1X

APT.
M 3.07

APT.
TYPE
1T

APT.
M 3.06

APT.
TYPE
1T

APT.
M 3.05

APT.
TYPE
3L

COMMUNAL
DECK

1 Bed, 1 Bath
1 Car
Int. 60m²
Ext. 18.5m²

1 Bed, 1 Bath
1 Car
Int. 60m²
Ext. 18.5m²

3 Bed, 2 Bath
2 Car
Int. 99m²
Ext. 35m²

Disclaimer: This plan is indicative, not to scale and for illustrative purposes only. This representation is intended as a guide only and interested parties should refer to the specific apartment floor plan for further information and dimensions. The final product may differ from that illustrated, including changes to orientation, floor plan and layout. Furniture depicted is provided as a guide only and is not sold pursuant to the contract of sale. To the extent of any inconsistency between this floor plan and the building format plan, the building format plan prevails. These plans are subject to variation as set out in the contract of sale including resulting from design changes, approvals and final survey following completion of construction. Changes, including dimensions, specifications and fittings (including colours), will occur as the development progresses.



MALVERN COLLECTIVE

M EDITION LEVEL 04

MALVERN COLLECTIVE

| MELBOURNE |



Disclaimer: This plan is indicative, not to scale and for illustrative purposes only. This representation is intended as a guide only and interested parties should refer to the specific apartment floor plan for further information and dimensions. The final product may differ from that illustrated, including changes to orientation, floor plan and layout. Furniture depicted is provided as a guide only and is not sold pursuant to the contract of sale. To the extent of any inconsistency between this floor plan and the building format plan, the building format plan prevails. These plans are subject to variation as set out in the contract of sale including resulting from design changes, approvals and final survey following completion of construction. Changes, including dimensions, specifications and fittings (including colours), will occur as the development progresses.

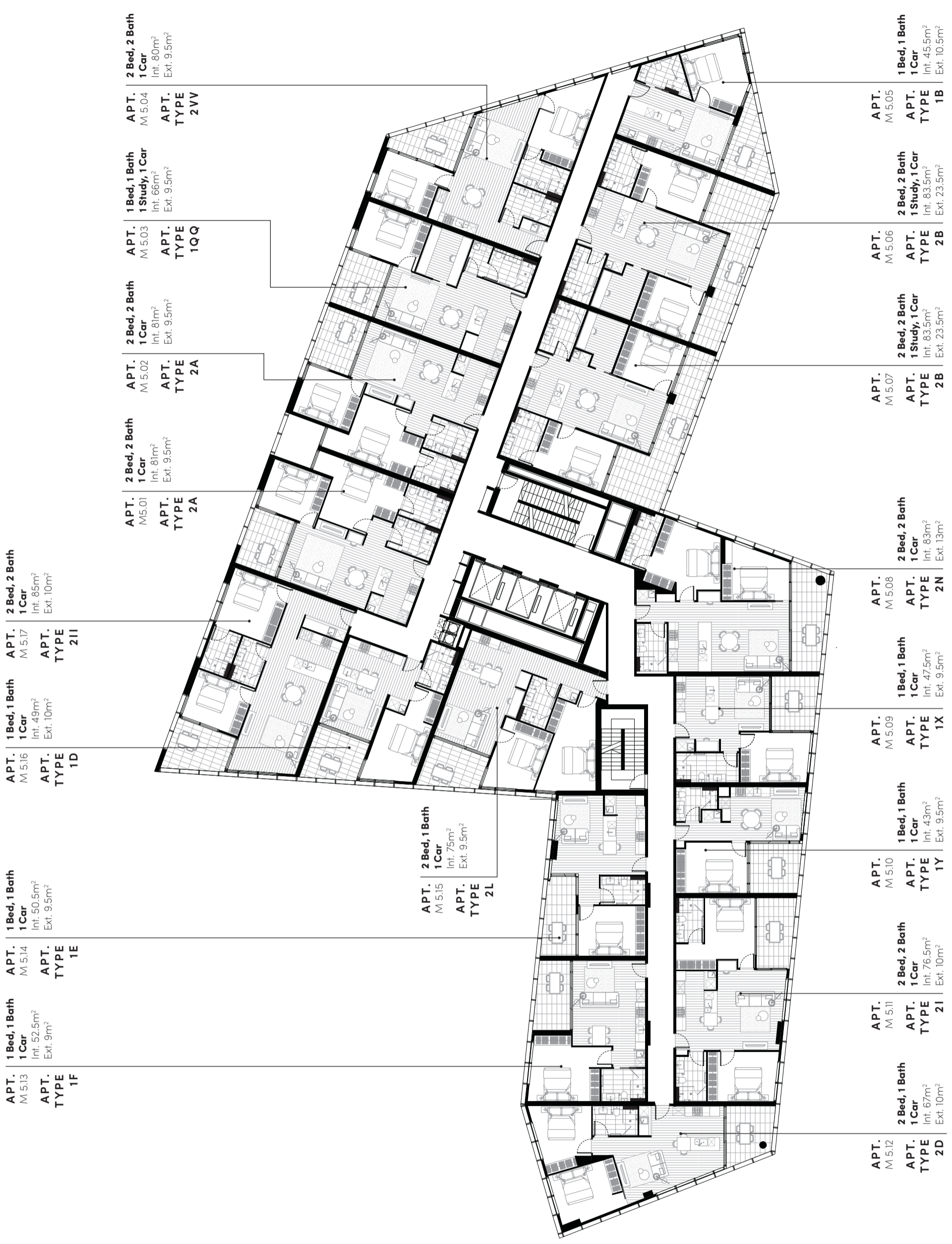


MALVERN COLLECTIVE

M EDITION
LEVEL 05

MALVERN COLLECTIVE

| MELBOURNE |



NORTH

Disclaimer: This plan is indicative, not to scale and for illustrative purposes only. This representation is intended as a guide only and interested parties should refer to the specific apartment floor plan for further information and dimensions. The final product may differ from that illustrated, including changes to orientation, floor plan and layout. Furniture depicted is provided as a guide only and is not sold pursuant to the contract of sale. To the extent of any inconsistency between this floor plan and the building format plan, the building format plan prevails. These plans are subject to variation as set out in the contract of sale including, resulting from design changes, approvals and final survey following completion of construction. Changes, including dimensions, specifications and fittings (including colours), will occur as the development progresses.

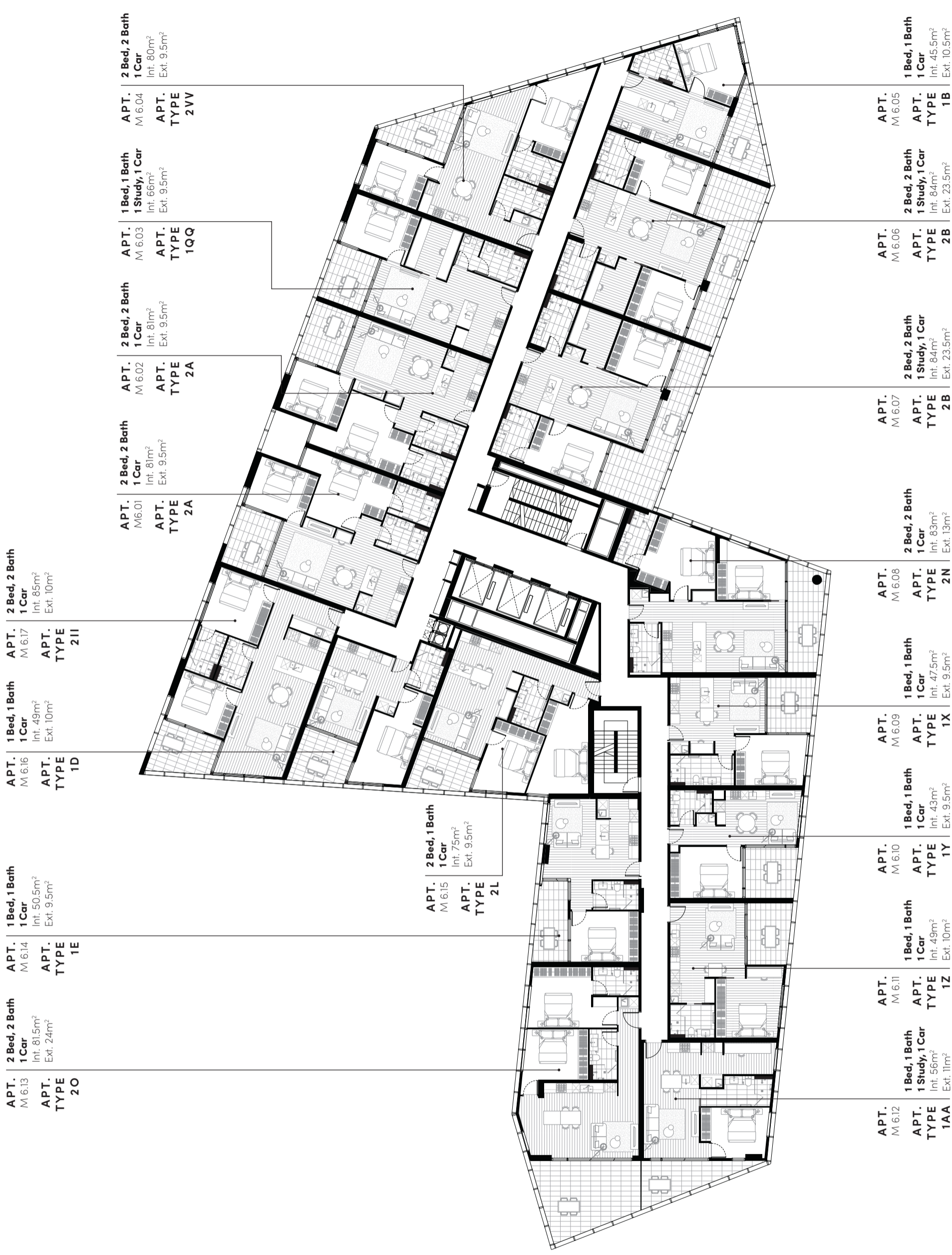


MALVERN COLLECTIVE

M EDITION LEVEL 06

MALVERN COLLECTIVE

| MELBOURNE |



NORTH

Disclaimer: This plan is indicative, not to scale and for illustrative purposes only. This representation is intended as a guide only and interested parties should refer to the specific apartment floor plan for further information and dimensions. The final product may differ from that illustrated, including changes to orientation, floor plan and layout. Furniture depicted is provided as a guide only and is not sold pursuant to the contract of sale. To the extent of any inconsistency between this floor plan and the building format plan, the building format plan prevails. These plans are subject to variation as set out in the contract of sale including resulting from design changes, approvals and final survey following completion of construction. Changes, including dimensions, specifications and fittings (including colours), will occur as the development progresses.

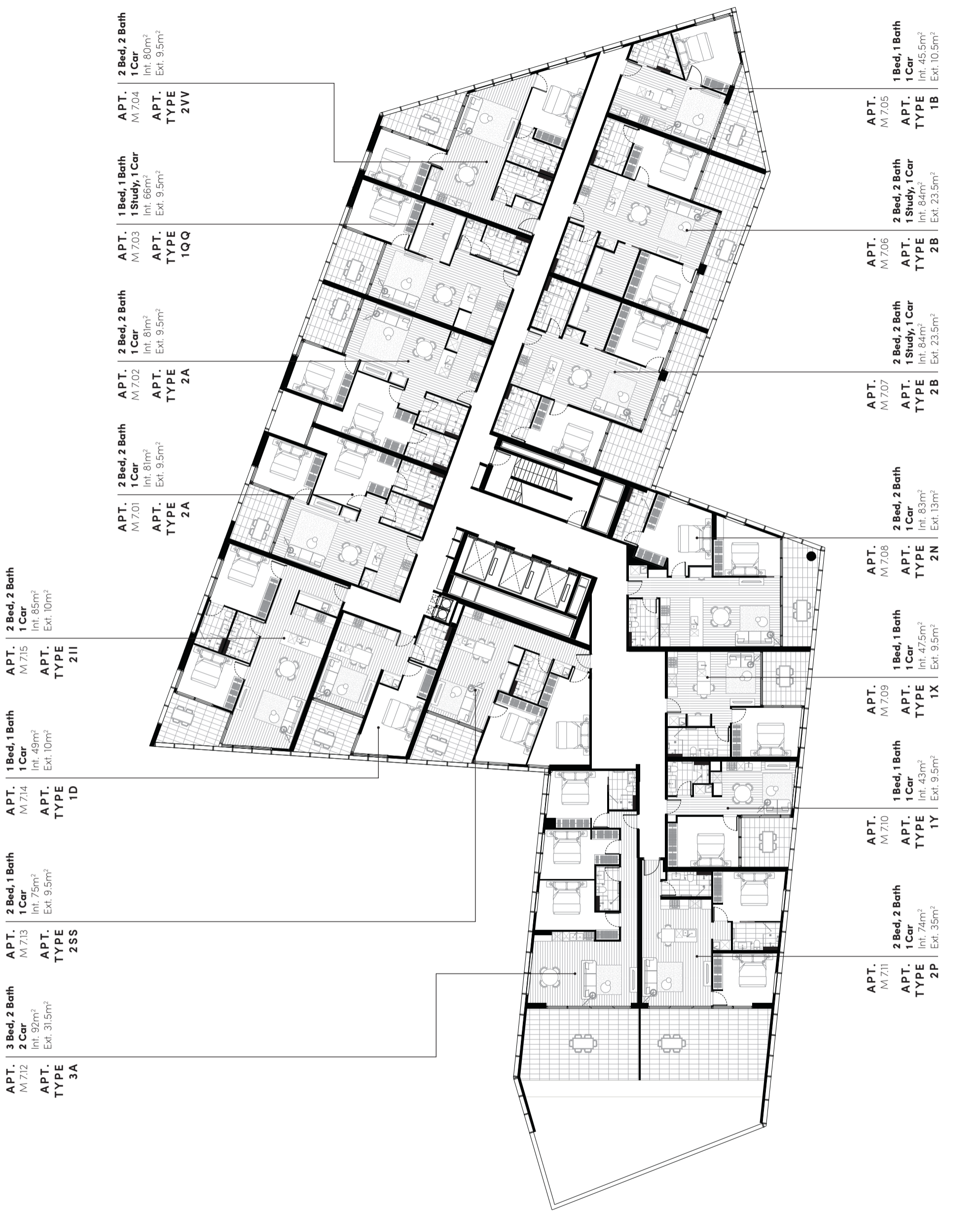


MALVERN COLLECTIVE

M EDITION LEVEL 07

MALVERN COLLECTIVE

| MELBOURNE |



NORTH

Disclaimer: This plan is indicative, not to scale and for illustrative purposes only. This representation is intended as a guide only and interested parties should refer to the specific apartment floor plan for further information and dimensions. The final product may differ from that illustrated, including changes to orientation, floor plan and layout. Furniture depicted is provided as a guide only and is not sold pursuant to the contract of sale. To the extent of any inconsistency between this floor plan and the building format plan, the building format plan prevails. These plans are subject to variation as set out in the contract of sale including, resulting from design changes, approvals and final survey following completion of construction. Changes, including dimensions, specifications and fittings (including colours), will occur as the development progresses.

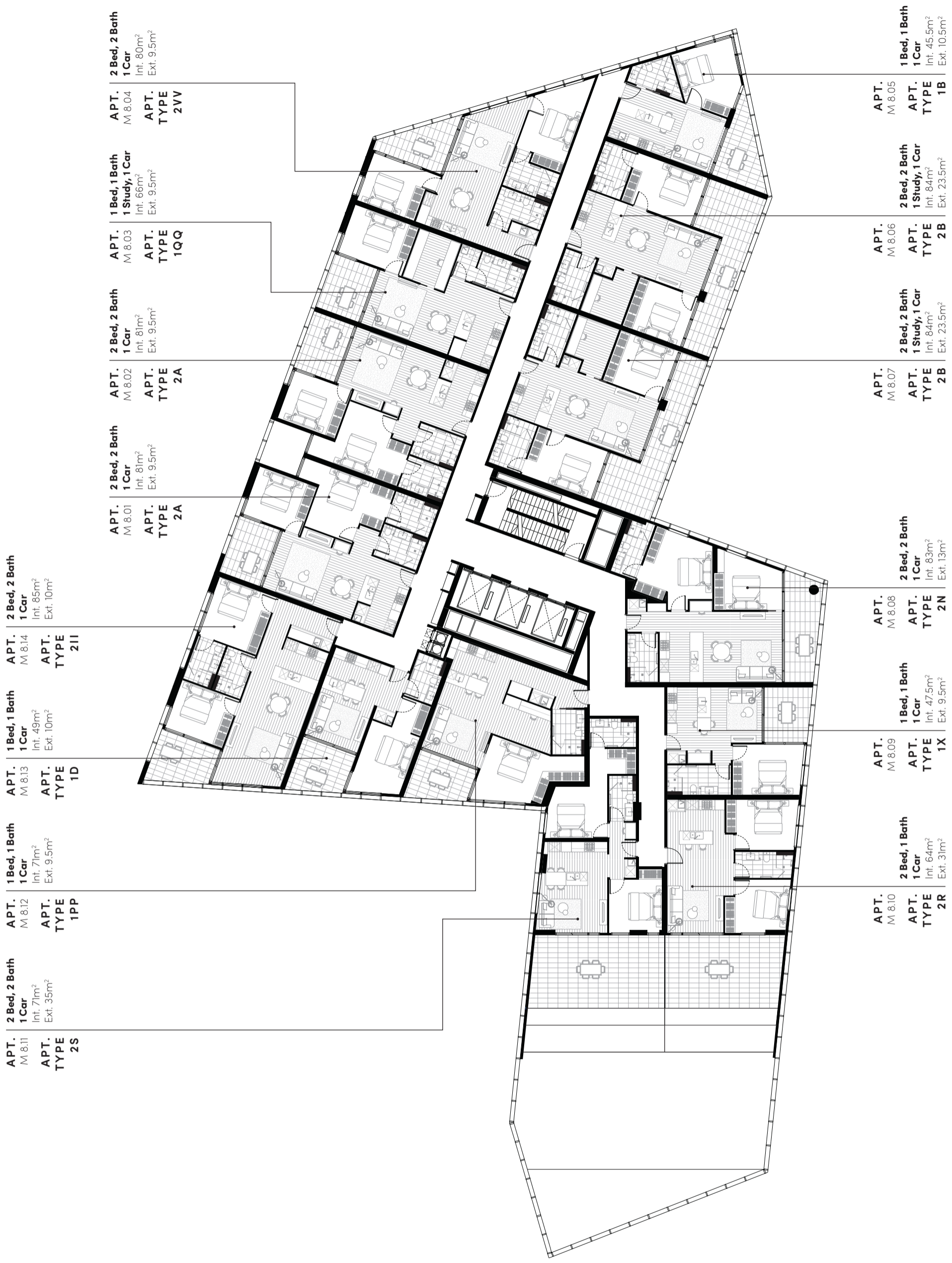


MALVERN COLLECTIVE

M EDITION LEVEL 08

MALVERN COLLECTIVE

| MELBOURNE |



NORTH

Disclaimer: This plan is indicative, not to scale and for illustrative purposes only. This representation is intended as a guide only and interested parties should refer to the specific apartment floor plan for further information and dimensions. The final product may differ from that illustrated, including changes to orientation, floor plan and layout. Furniture depicted is provided as a guide only and is not sold pursuant to the contract of sale. To the extent of any inconsistency between this floor plan and the building format plan, the building format plan prevails. These plans are subject to variation as set out in the contract of sale including resulting from design changes, approvals and final survey following completion of construction. Changes, including dimensions, specifications and fittings (including colours), will occur as the development progresses.



MALVERN COLLECTIVE

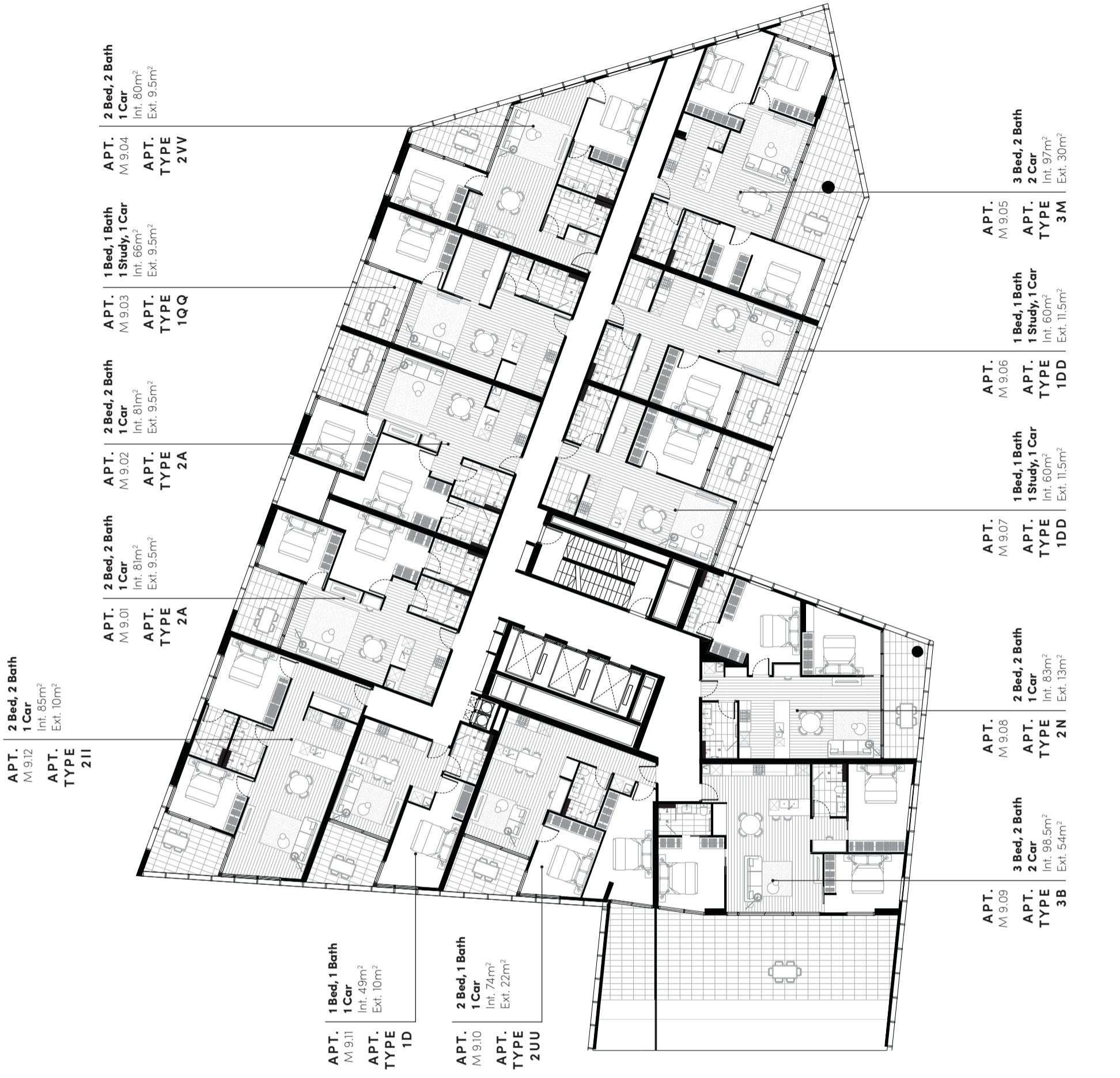
M EDITION LEVEL 09

MALVERN COLLECTIVE

| MELBOURNE |



NORTH



Disclaimer: This plan is indicative, not to scale and for illustrative purposes only. This representation is intended as a guide only and interested parties should refer to the specific apartment floor plan for further information and dimensions. The final product may differ from that illustrated, including changes to orientation, floor plan and layout. Furniture depicted is provided as a guide only and is not sold pursuant to the contract of sale. To the extent of any inconsistency between this floor plan and the building format plan, the building format plan prevails. These plans are subject to variation as set out in the contract of sale including resulting from design changes, approvals and final survey following completion of construction. Changes, including dimensions, specifications and fittings (including colours), will occur as the development progresses.

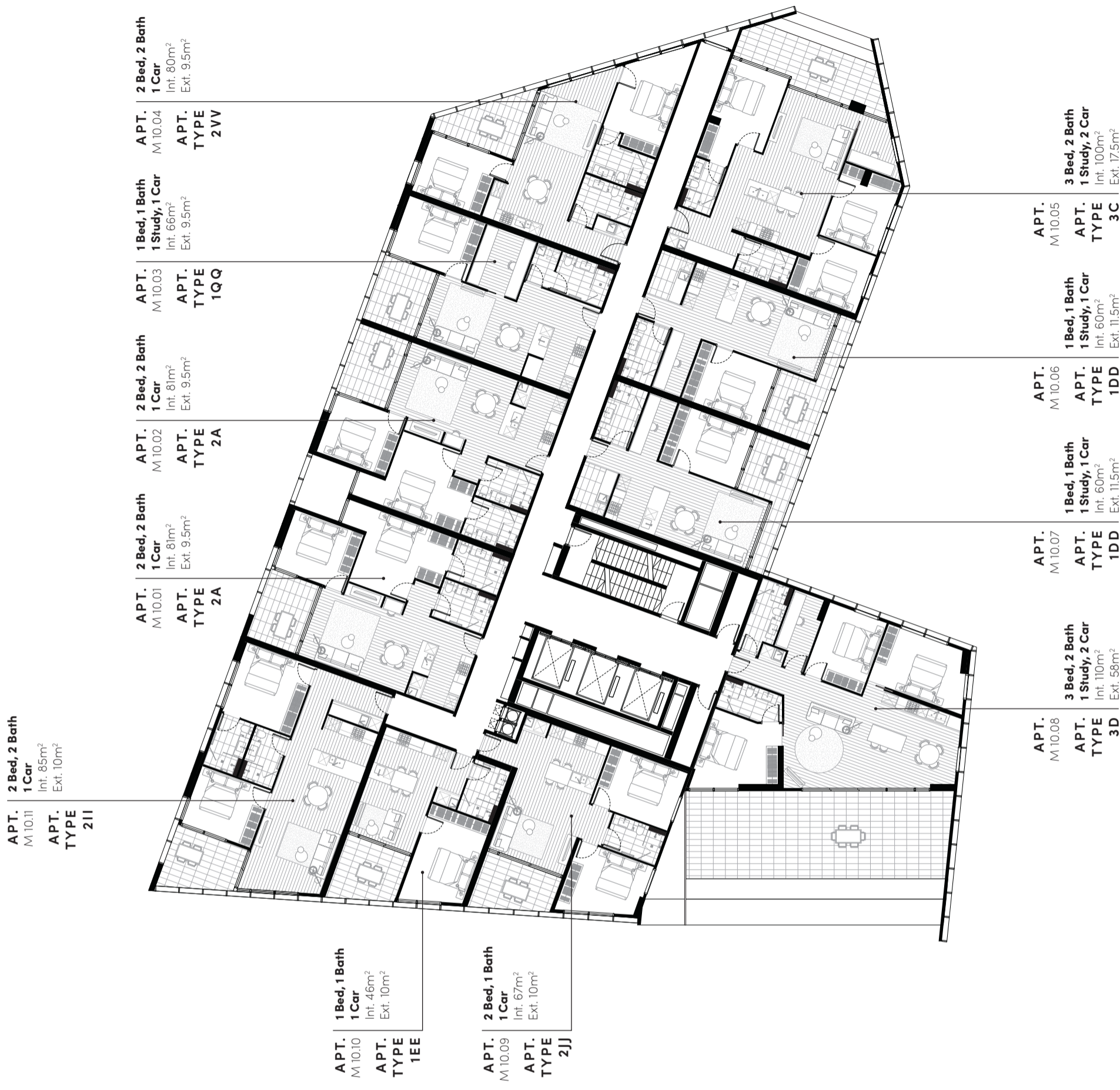


MALVERN COLLECTIVE

M EDITION LEVEL 10

MALVERN COLLECTIVE

| MELBOURNE |



NORTH

Disclaimer: This plan is indicative, not to scale and for illustrative purposes only. This representation is intended as a guide only and interested parties should refer to the specific apartment floor plan for further information and dimensions. The final product may differ from that illustrated, including changes to orientation, floor plan and layout. Furniture depicted is provided as a guide only and is not sold pursuant to the contract of sale. To the extent of any inconsistency between this floor plan and the building format plan, the building format plan prevails. These plans are subject to variation as set out in the contract of sale including resulting from design changes, approvals and final survey following completion of construction. Changes, including dimensions, specifications and fittings (including colours), will occur as the development progresses.

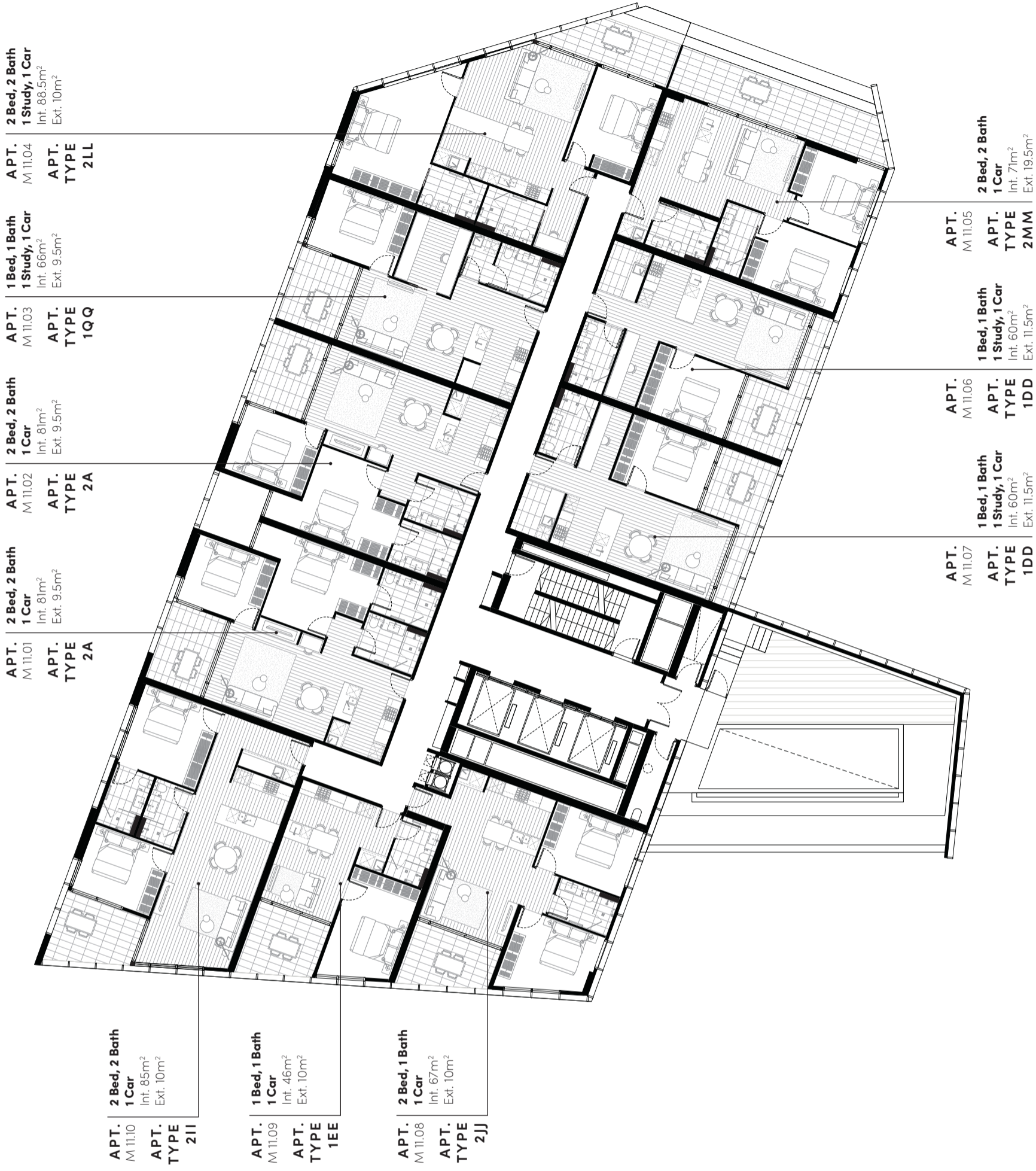


MALVERN COLLECTIVE

M EDITION
LEVEL 11

MALVERN COLLECTIVE

| MELBOURNE |



NORTH

Disclaimer: This plan is indicative, not to scale and for illustrative purposes only. This representation is intended as a guide only and interested parties should refer to the specific apartment floor plan for further information and dimensions. The final product may differ from that illustrated, including changes to orientation, floor plan and layout. Furniture depicted is provided as a guide only and is not sold pursuant to the contract of sale. To the extent of any inconsistency between this floor plan and the building format plan, the building format plan prevails. These plans are subject to variation as set out in the contract of sale including resulting from design changes, approvals and final survey following completion of construction. Changes, including dimensions, specifications and fittings (including colours), will occur as the development progresses.

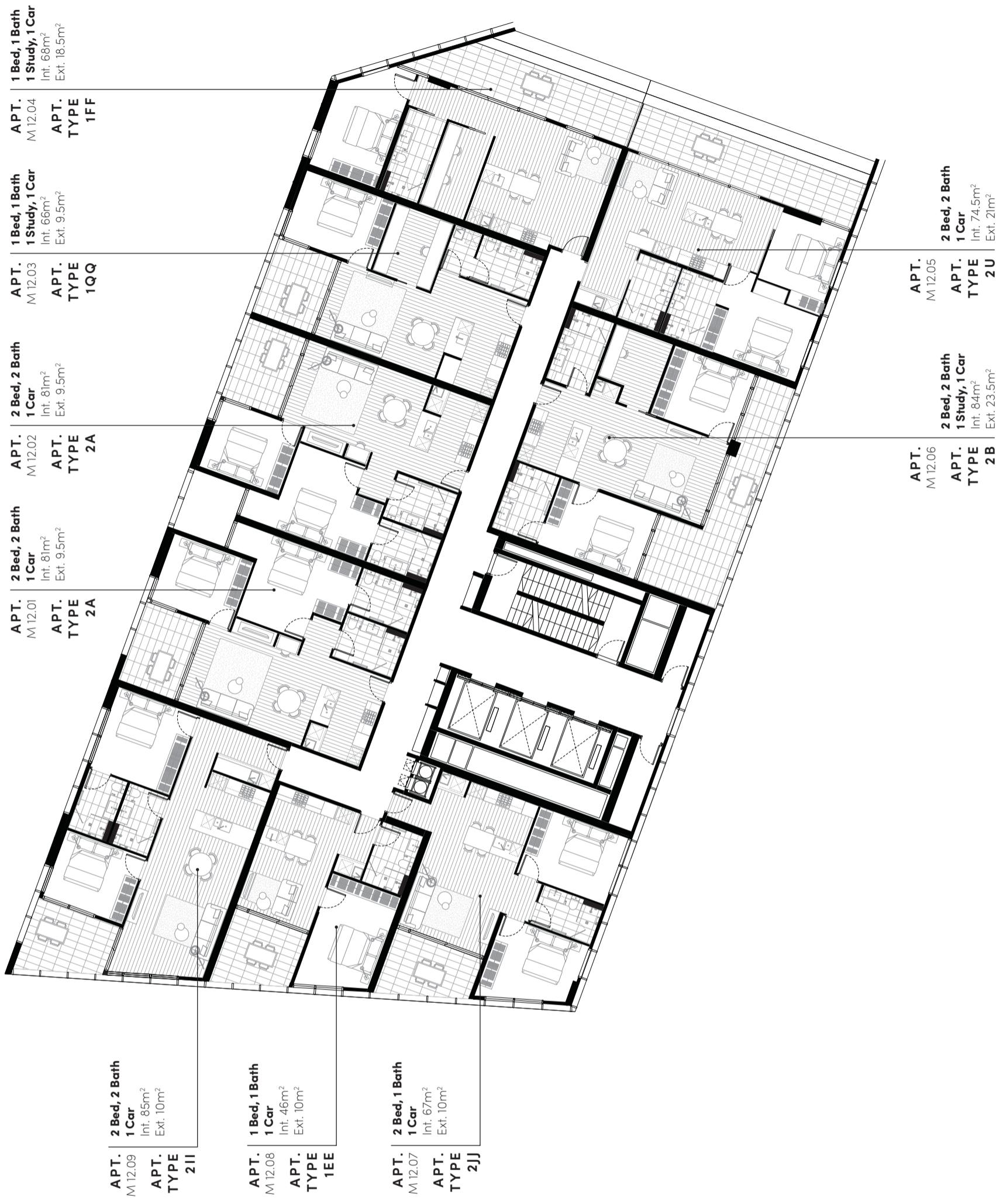


MALVERN COLLECTIVE

M EDITION LEVEL 12

MALVERN COLLECTIVE

| MELBOURNE |



NORTH

Disclaimer: This plan is indicative, not to scale and for illustrative purposes only. This representation is intended as a guide only and interested parties should refer to the specific apartment floor plan for further information and dimensions. The final product may differ from that illustrated, including changes to orientation, floor plan and layout. Furniture depicted is provided as a guide only and is not sold pursuant to the contract of sale. To the extent of any inconsistency between this floor plan and the building format plan, the building format plan prevails. These plans are subject to variation as set out in the contract of sale including resulting from design changes, approvals and final survey following completion of construction. Changes, including dimensions, specifications and fittings (including colours), will occur as the development progresses.

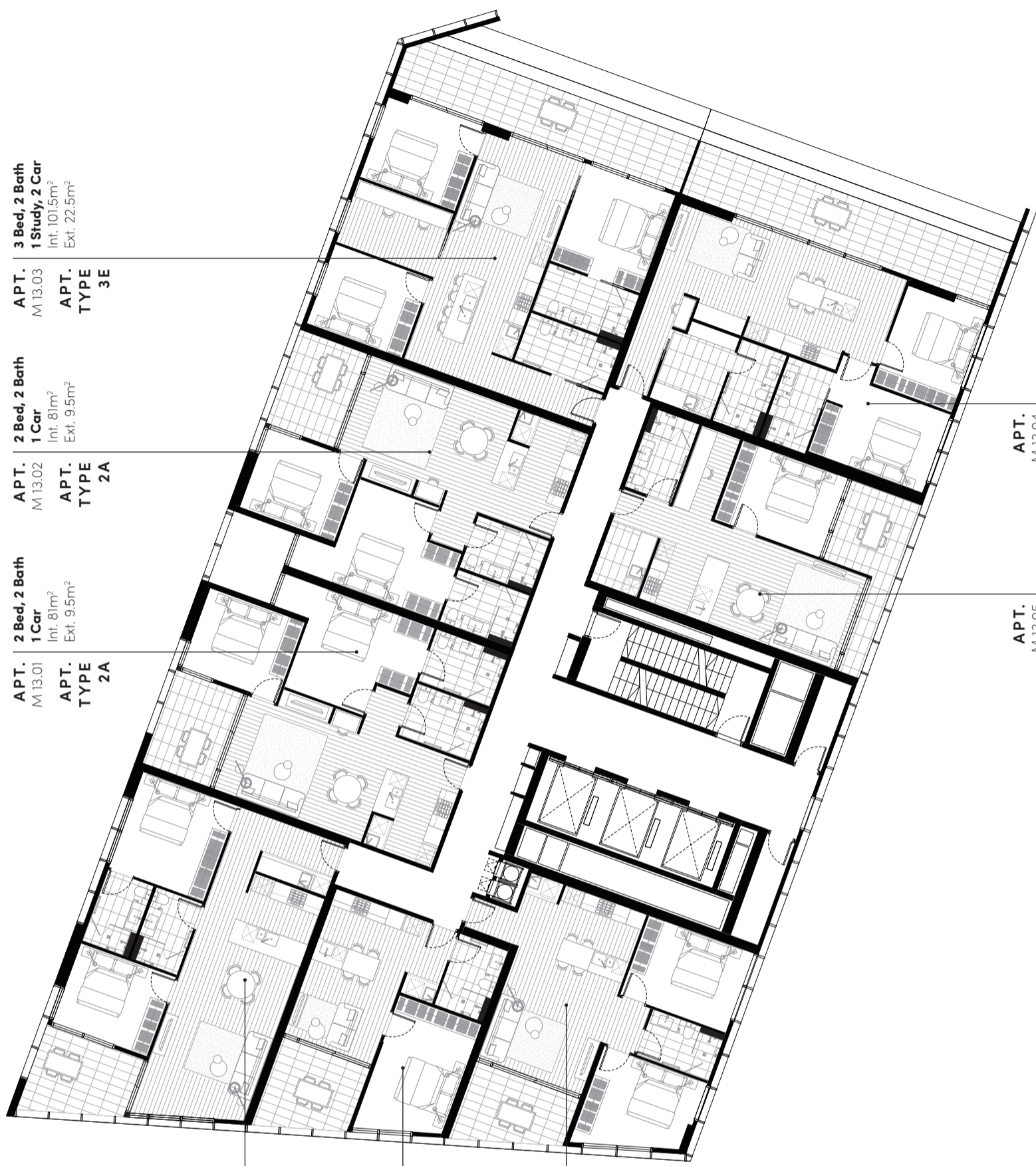


MALVERN COLLECTIVE

M EDITION LEVEL 13

MALVERN COLLECTIVE

| MELBOURNE |



APT.
M13.08

2 Bed, 2 Bath
1 Car
Int. 85m²
Ext. 10m²

APT.
TYPE
2II

APT.
M13.07

1 Bed, 1 Bath
1 Car
Int. 46m²
Ext. 10m²

APT.
TYPE
1EE

APT.
M13.06

2 Bed, 1 Bath
1 Car
Int. 67m²
Ext. 10m²

APT.
TYPE
2JJ

APT.
M13.03

3 Bed, 2 Bath
1 Study, 2 Car
Int. 101.5m²
Ext. 22.5m²

APT.
TYPE
3E

APT.
M13.02

2 Bed, 2 Bath
1 Car
Int. 81m²
Ext. 9.5m²

APT.
TYPE
2A

APT.
M13.01

2 Bed, 2 Bath
1 Car
Int. 81m²
Ext. 9.5m²

APT.
TYPE
2A

APT.
M13.04

2 Bed, 2 Bath
1 Car
Int. 88.5m²
Ext. 24m²

APT.
TYPE
2V

APT.
M13.05

1 Bed, 1 Bath
1 Study, 1 Car
Int. 60m²
Ext. 11.5m²

APT.
TYPE
1DD



NORTH

Disclaimer: This plan is indicative, not to scale and for illustrative purposes only. This representation is intended as a guide only and interested parties should refer to the specific apartment floor plan for further information and dimensions. The final product may differ from that illustrated, including changes to orientation, floor plan and layout. Furniture depicted is provided as a guide only and is not sold pursuant to the contract of sale. To the extent of any inconsistency between this floor plan and the building format plan, the building format plan prevails. These plans are subject to variation as set out in the contract of sale including resulting from design changes, approvals and final survey following completion of construction. Changes, including dimensions, specifications and fittings (including colours), will occur as the development progresses.

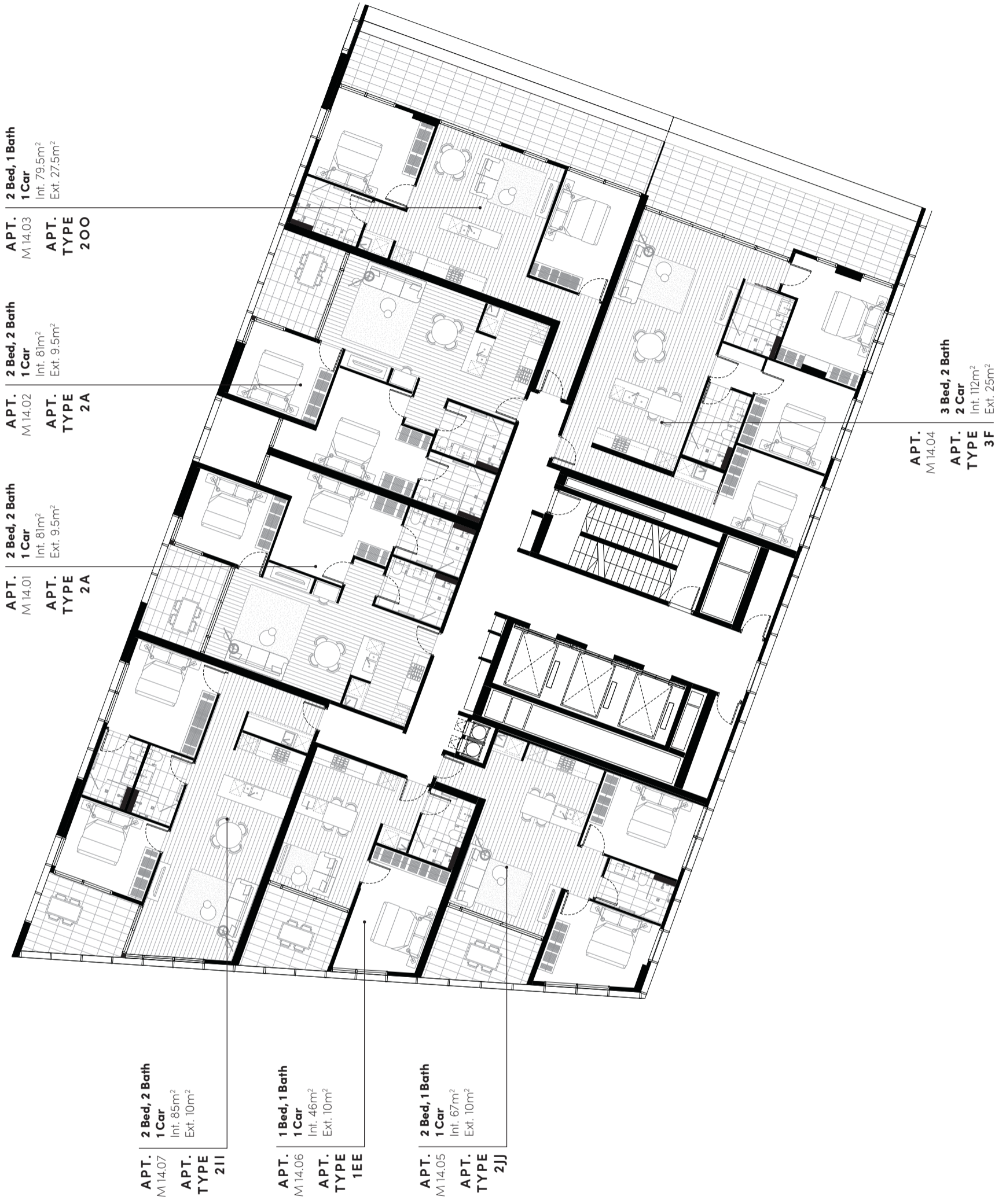


MALVERN COLLECTIVE

M EDITION LEVEL 14

MALVERN COLLECTIVE

| MELBOURNE |



NORTH

Disclaimer: This plan is indicative, not to scale and for illustrative purposes only. This representation is intended as a guide only and interested parties should refer to the specific apartment floor plan for further information and dimensions. The final product may differ from that illustrated, including changes to orientation, floor plan and layout. Furniture depicted is provided as a guide only and is not sold pursuant to the contract of sale. To the extent of any inconsistency between this floor plan and the building format plan, the building format plan prevails. These plans are subject to variation as set out in the contract of sale including resulting from design changes, approvals and final survey following completion of construction. Changes, including dimensions, specifications and fittings (including colours), will occur as the development progresses.

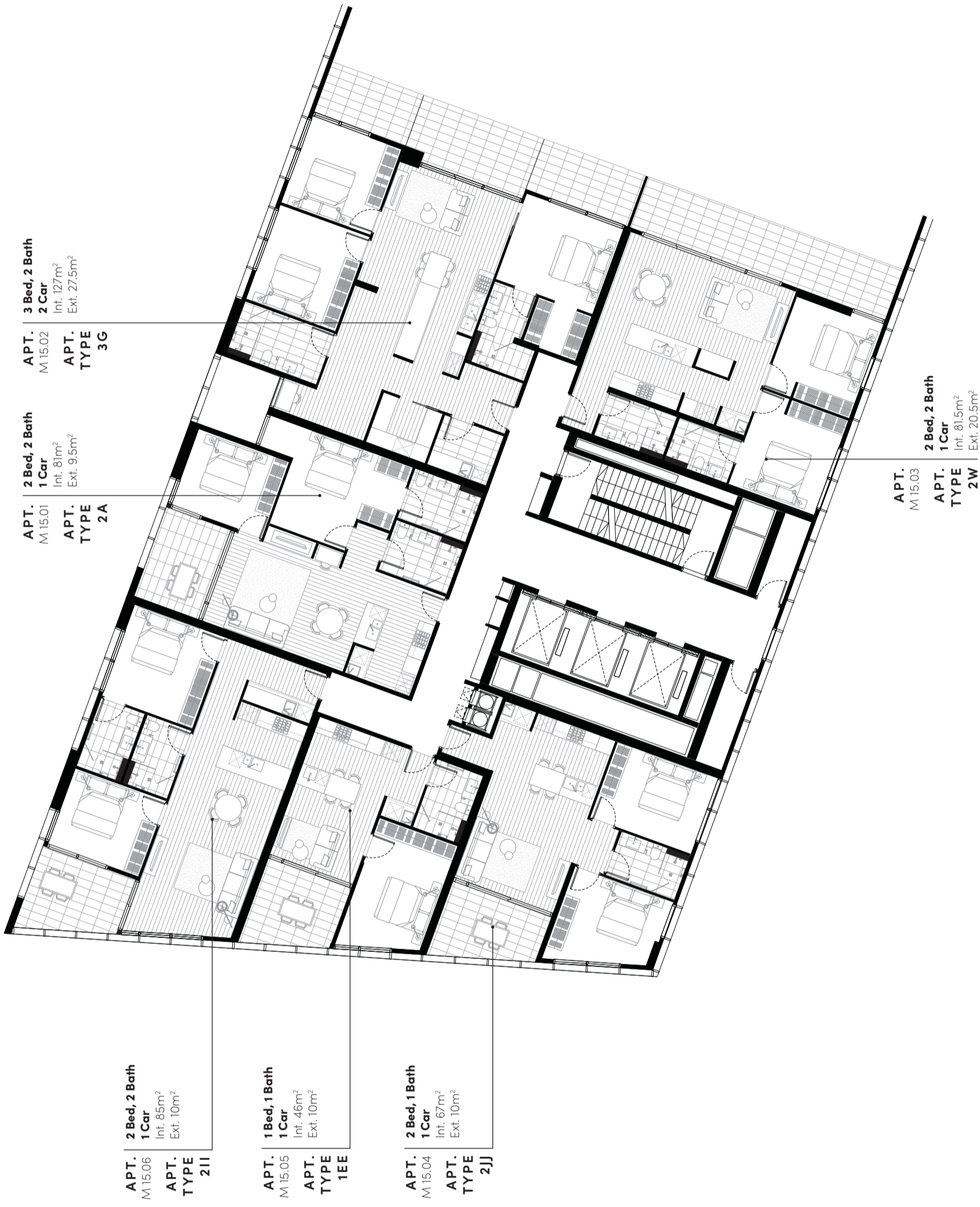


MALVERN COLLECTIVE

M EDITION LEVEL 15

MALVERN COLLECTIVE

| MELBOURNE |



NORTH

Disclaimer: This plan is indicative, not to scale and for illustrative purposes only. This representation is intended as a guide only and interested parties should refer to the specific apartment floor plan for further information and dimensions. The final product may differ from that illustrated, including changes to orientation, floor plan and layout. Furniture depicted is provided as a guide only and is not sold pursuant to the contract of sale. To the extent of any inconsistency between this floor plan and the building format plan, the building format plan prevails. These plans are subject to variation as set out in the contract of sale including resulting from design changes, approvals and final survey following completion of construction. Changes, including dimensions, specifications and fittings (including colours), will occur as the development progresses.



MALVERN COLLECTIVE

M EDITION LEVEL 16

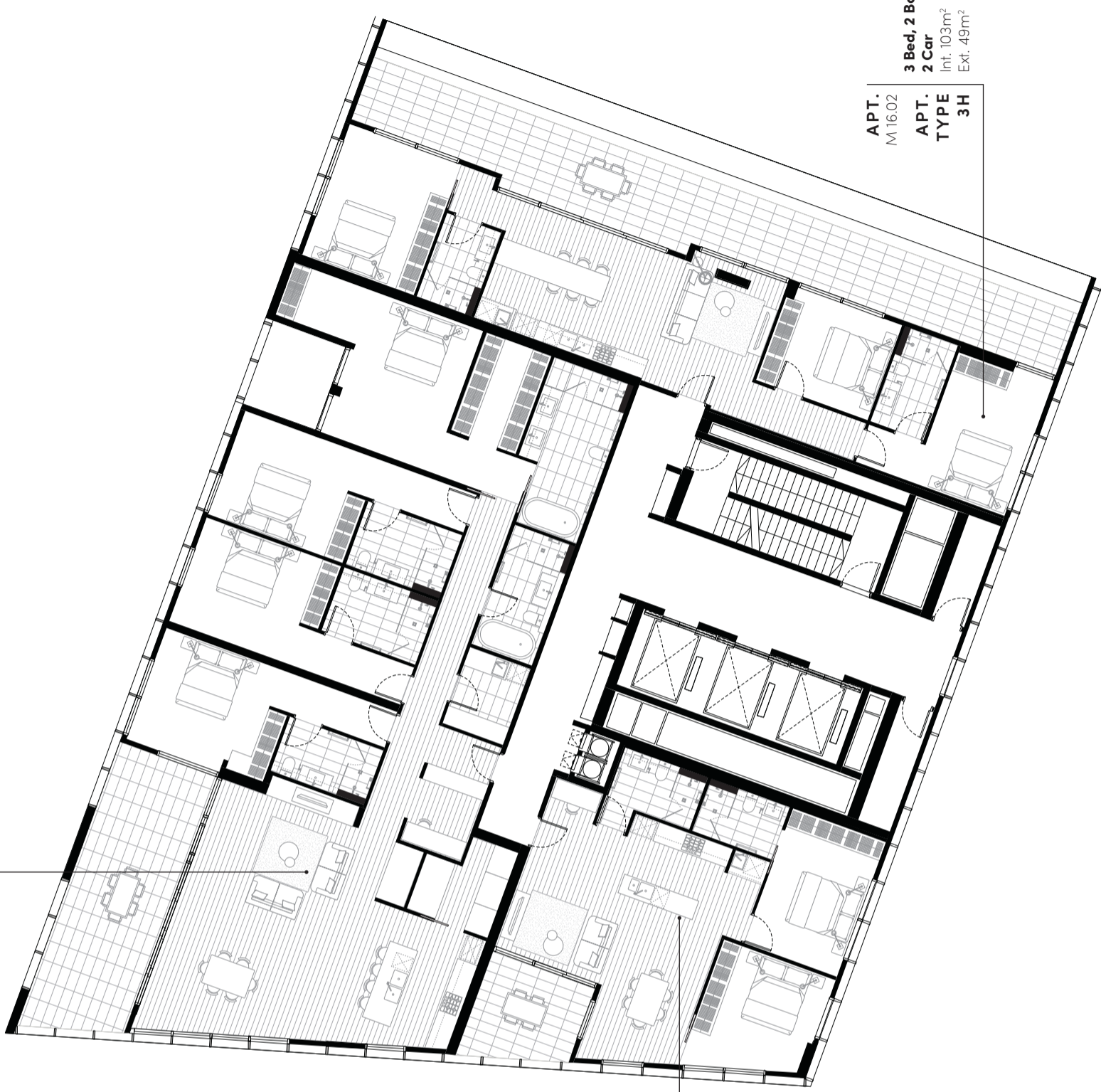
MALVERN COLLECTIVE

| MELBOURNE |



NORTH

APT.
M16.01
4 Bed, 5 Bath
1 Study, 3 Car
Int. 235.5m²
Ext. 27.5m²
APT.
TYPE
4A



APT.
M16.03
2 Bed, 2 Bath
1 Car
Int. 82.5m²
Ext. 10m²
APT.
TYPE
2QQ

APT.
M16.02
3 Bed, 2 Bath
2 Car
Int. 103m²
Ext. 49m²
APT.
TYPE
3H

Disclaimer: This plan is indicative, not to scale and for illustrative purposes only. This representation is intended as a guide only and interested parties should refer to the specific apartment floor plan for further information and dimensions. The final product may differ from that illustrated, including changes to orientation, floor plan and layout. Furniture depicted is provided as a guide only and is not sold pursuant to the contract of sale. To the extent of any inconsistency between this floor plan and the building format plan, the building format plan prevails. These plans are subject to variation as set out in the contract of sale including resulting from design changes, approvals and final survey following completion of construction. Changes, including dimensions, specifications and fittings (including colours), will occur as the development progresses.