



PORT PHILLIP
BAY

DANDENONG
ROAD

MALVERN COLLECTIVE

MALVERN
CENTRAL

| MELBOURNE |

ST KILDA EAST

CAULFIELD
NORTH



GLENFERRIE
ROAD

HIGH
STREET

MALVERN
TOWN HALL

MELBOURNE CBD

ARMADALE

MALVERN



PIZZA RELIGION



MILLSTONE



ESPRESSO STATION



TONIC & GRACE

Local Heroes

NEIGHBOURHOOD



From dawn to dusk, Malvern satiates the most discerning of palates, beginning with a hearty breakfast at Master of None or The Pour Kids. When your caffeine levels drop, Espresso Station is on hand for a quick refill, and Millstone is your go-to for almost too-pretty-to-eat sweet treats. Feel good with healthy, insta-fave eats from Tonic & Grace, indulge in a long lunch at modern Italian favourite Sagra or join the worship at Pizza Religion. At every hour, for every taste, Malvern delivers.

The New Icon

ARCHITECTURE



The diversity and distinction at the heart of Malvern Collective is seen in its inspiring architecture. Rising above the signature heritage buildings and gateway Melbourne site, the bold and brilliant design heralds a new age for this neighbourhood, honouring its past and celebrating its future to create a new icon as striking and sophisticated as Malvern itself. From every angle, the award-winning studio of Jackson Clements Burrows has envisioned a place of close-knit community and commanding style.



| THE M EDITION |



| THE C EDITION |



ARTIST IMPRESSION

KK



Q&A

AN INTERVIEW WITH GRAHAM BURROWS
DIRECTOR, JACKSON CLEMENTS BURROWS



Jackson Clements Burrows is one of Australia's most distinguished architectural studios. Established in 1998 by Tim Jackson, John Clements and Graham Burrows, JCB is renowned for the innovative design and site-sensitive approach of its remarkable projects. Malvern Collective is testament to co-director Graham Burrows' passion for projects that engage with the local community.

Malvern Collective features a striking architectural form. What was your inspiration?

From the beginning, we were inspired by its unique position. The wedge shape of the site creates multiple perspectives, including the serenity of the Dandenong Ranges in the distance as well as the active neighbourhood of Malvern in the foreground. We took our inspiration from the mountain ranges in the upper forms, while the lower forms engage with the rich fabric of the Glenferrie Road precinct.

And this approach led to the multiple building forms?

Yes, each building responds to three unique perspectives: Glenferrie Road, Dandenong Road and Malvern train station, along with reactivating Station Place's bluestone laneway through to Malvern Collective's new retail precinct. The architecture is about moving away from the traditional, monolithic tower to create a collection of spaces that embrace and celebrate their individual contexts.

This is an iconic site at the intersection of two key Melbourne roads. How did this inform the design?

On the ground level, the design is informed by a sense of connectivity and community. This includes direct access to the train station and surrounding neighbourhood. On a larger scale, we recognised that this is a gateway position for Melbourne's southeast, and that called for an iconic quality to the design. The mountain forms, the prismatic design and natural landscaping all add to this sense of contemporary grandeur.

The site is also notable for its rich heritage. How did you celebrate this in the architecture?

This was a fantastic opportunity, because we wanted to honour and restore the character of the heritage buildings. We have ensured the rhythm of the architecture is in keeping with the Glenferrie Road streetscape, while the upper form is respectfully set back. It was important that the scale of the podium element was consistent with the low-rise heritage buildings. It's about various scales, juxtaposing past and present, working together in unique harmony.

How did this inform the materiality of Malvern Collective?

The lower levels of the podium draw upon the heritage context of Glenferrie Road to create a solid base, with polished concrete, while along the train line the architecture echoes the repetition of the railway tracks through a vertical rhythm. Extending above these solid forms are the towers clad in glass. Each tower has a slightly different tint, designed to pick up the colours of the sky with a warmth and lustre depending on the orientation and how the sunlight moves across them during the day.

Your work has won many awards for projects including Upper House and The Cullen Hotel. Do these share a JCB signature which we would find at Malvern Collective?

Only in that our projects first and foremost respond to their own individual context. With each project, the built form is shaped around the unique heritage, the neighbourhood and ultimately the future residents. We believe that by carefully considering and responding to the specific nature of a site we can create a place that's truly unique. And that is certainly true of Malvern Collective – it will be a landmark for generations to come.

jcba.com.au

WITH MODERNIST DESIGN
AND 7 DAY CONCIERGE SERVICE,
THE LOBBY SETS THE SCENE
FOR AN EFFORTLESSLY
SOPHISTICATED ADDRESS.





ARTIST IMPRESSION





Light & Shade

—
INTERIOR DESIGN

The acclaimed studio of Carr has crafted the interiors of Malvern Collective inspired by 5-star hotels from around the world, uniting international design thinking with a practical focus on how the spaces will be used every day. From celebrating the art of entertaining to creating places of peaceful retreat, the studio's expertise has led to the development of highly refined apartments and penthouses. Echoing the vertical rhythms of the architecture, each residence is imbued with a sense of warmth and texture – a place of timeless appeal for modern living.





A HARMONY OF DESIGN AND
WARMTH IN THE MATERIALITY
CREATES A HOME THAT IS BOTH
HIGHLY CONTEMPORARY AND
NATURALLY WELCOMING.





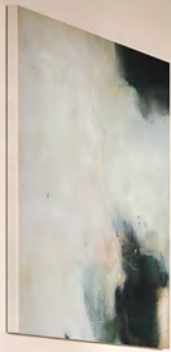
BALANCING EFFICIENCY AND ELEGANCE,
THE SIGNATURE MALVERN COLLECTIVE
PALETTE CELEBRATES THE RICHNESS
OF WALNUT FINISHES.







THE LIGHT PALETTE INTRODUCES
A CRISP, CLEAN AND CONTEMPORARY
STYLE, DESIGNED AROUND QUALITY,
CRAFTSMANSHIP AND PRACTICALITY.





INSPIRED BY THE JAPANESE TRADITIONS OF BATHING AND WELLNESS, THE BATHROOM IS A TRANQUIL RETREAT OF IMPECCABLE STYLE.



ARTIST IMPRESSION







AN IMPRESSIVE BACKDROP FOR INTIMATE GATHERINGS, MALVERN COLLECTIVE'S PRIVATE DINING ROOM IS IMBUED WITH UNDERSTATED ELEGANCE.

ARTIST IMPRESSION

—
WHETHER JOINING A BARBECUE
FEAST OR TENDING TO THE
HERB GARDEN, THE TERRACE
IS FOR MALVERN COLLECTIVE
RESIDENTS TO ENJOY TOGETHER.







Sagra



Your Cheapest Ticket To Italy

SAGRA.COM.AU
256 GLENFERRIE ROAD, MALVERN
9079 5600
CIAO@SAGRA.COM.AU



-
WIND DOWN AT SUNSET
IN LEVEL 11'S LAP POOL,
AND SOAK IN THE
SPECTACULAR VIEWS.





ARTIST IMPRESSION

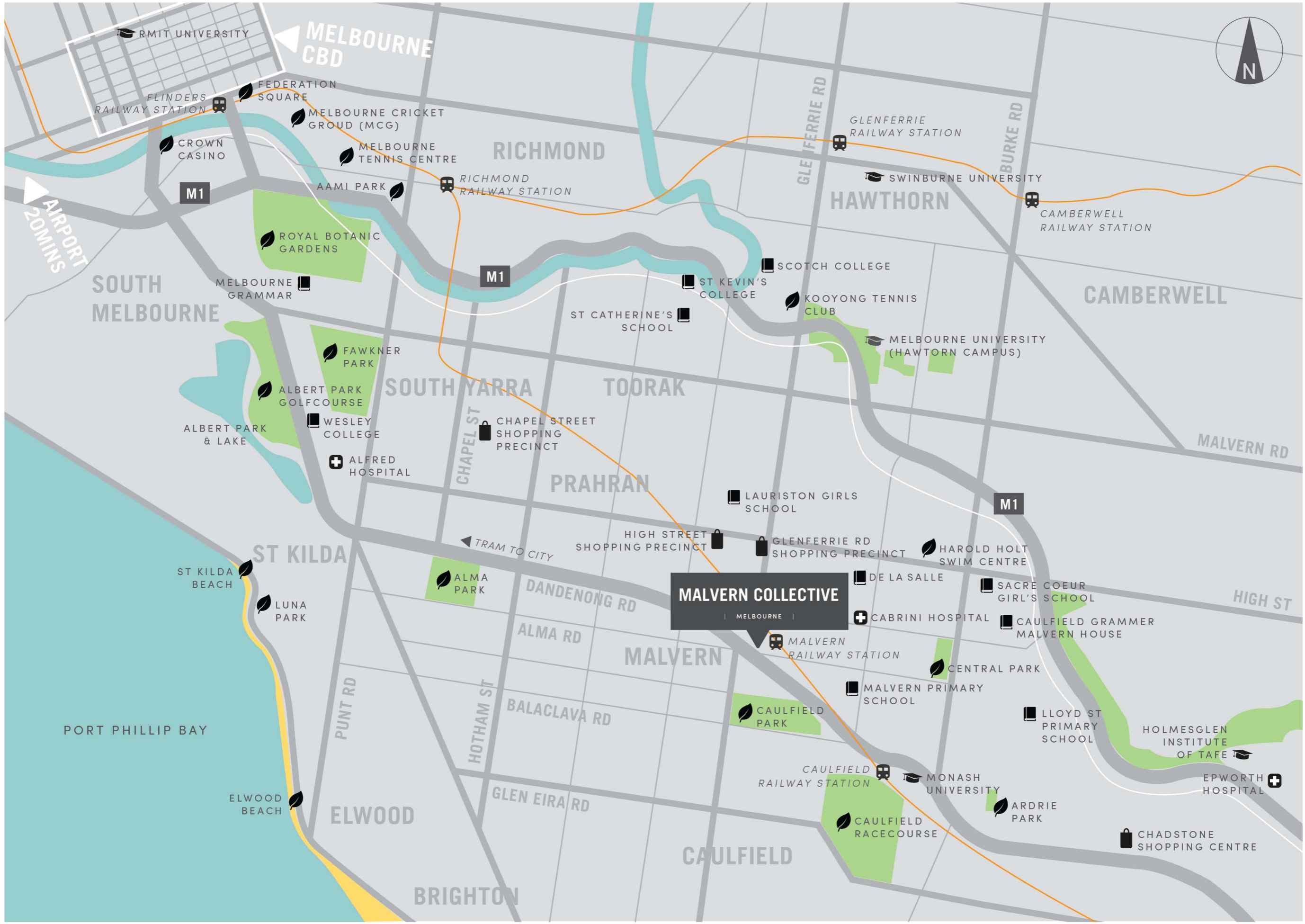


Hide & Seek

DISCOVERY

Running through the heart of Malvern Collective lies Station Place – a hidden, historic laneway brought back to life with a nod to Melbourne’s celebrated laneway culture. Incorporating bluestone brickwork to reflect the heritage of the area, Station Place will celebrate Malvern Collective’s new retail precinct, along with providing residents ease of access to Malvern train station.





MALVERN COLLECTIVE
 | MELBOURNE |

-  Schools
-  Universities
-  Health
-  Transport
-  Parks & Leisure
-  Shopping

Outstanding Location

